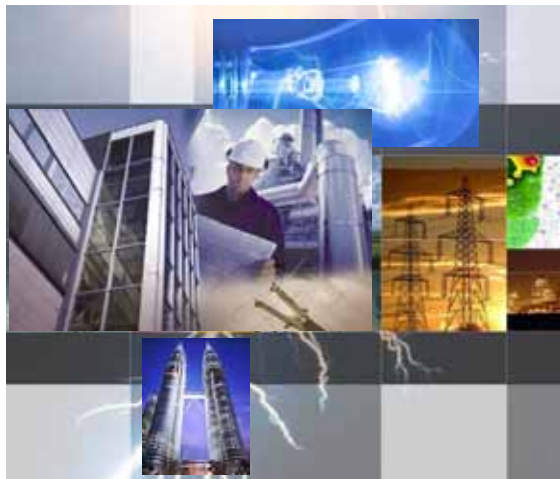


# E-POWER

ECM900 Series

Multifunction Energy Meter

➔ ECM903  
ECM901



E-Power Technology Ltd.

<http://www.e-powertech.ca>

# ECM903 Three-phase Multifunction Energy Meter

## Description

ECM903 three phase multifunction energy meter is designed for measuring energy consumption in AC system.

This intelligent meter combines with micro-electronics technique, advanced integrate circuit, digital and SMT techniques. Via the special LCD display, the energy data is customer friendly and accurately presented. Additional, its compact design and DIN rail enable easy installing and maintaining.



## Feature

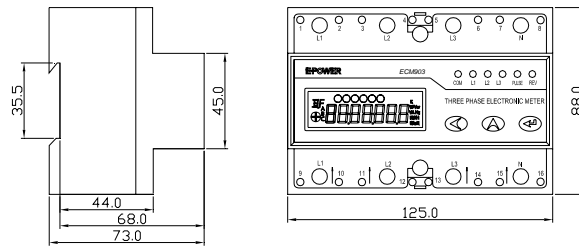
- Measuring voltage, current, power and energy in there phase system
- Energy accuracy up to class 0.5 or class 1
- 6+1 digits LCD display (999999.9 kWh)
- Programmalbe pulse output, standard DIN43864
- LED indicating pulse, phase failure and opposing energy
- One RS485 port, support MODBUS
- Optional reactive energy measuring
- Harmonic energy statistic
- TOU (time-of-use) and maximum demand calculation
- 35mm DIN rail instaling, standard DIN ED5002

## Performance Index

- Standard: DLT721-2000, IEC61000-4
- Active energy accuracy:  
Class 0.5, IEC 62053-22:2003  
Class 1, IEC 62053-21:2003
- Rated voltage: 220V/380V
- Rated current: 5(40)A, 10(60)A, 20(100)A
- Frequency input: 50Hz or 60Hz
- Starting current: 0.4%Ib
- Power loss < 3W
- Power frequency withstand voltage: AC2kV
- Impulse withstand voltage: 6kV (peak)
- Electrostatic discharge immunity test: IEC61000-4-2, Level 4
- Radiated immunity test: IEC61000-4-3, Level 3
- Electrical fast transient/burst immunity test: IEC61000-4-4, Level 3
- Surge immunity test: IEC61000-4-5, Level-3
- Conducted emissions: EN55022, Class B
- Radiated emission: EN55022, Class B
- Operating temperature: -40~ +70
- Storage temperature: -50~+85
- Humidity: 5~95%, non-condensing

## Dimension

Unit: mm



## Order Information

ECM903-- -- -- -- --

: Configuration	
<b>N</b>	Standard model
<b>M</b>	Multifunction model
: Accuracy	
<b>1</b>	Active energy accuracy is class 1
<b>0.5</b>	Active energy accuracy is class 0.5
: Rated current	
<b>40</b>	5(40)A
<b>60</b>	10(60)A
<b>100</b>	20(100)A

: Connection	
	3-phase 3-wire (delta)
<b>Y</b>	3-phase 4-wire (star)
: Auxiliary function (valid for ECM903- <b>M</b> - only)	
<b>H</b>	Harmonics energy,
<b>F</b>	TOU
<b>Q</b>	Reactive energy measuring
<b>D</b>	Demand analysis

### Notes:

- Standard model: The panel displays active energy, with active energy pulse output.  
Multifunction model: The panel displays active energy, with one RS485 port and active energy pulse output.
- The auxiliary functions are valid for multifunction model only. I.e. after select **M**, the **H/F/Q/D** can be selected.